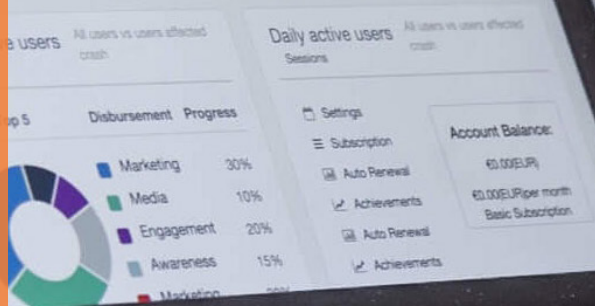




# TEXAS INSTRUCTIONAL LEADERSHIP



# Data Driven Instruction

## Texas Instructional Leadership (TIL) Modules:

- Lesson Planning and Formative Assessment
- **Data Driven Instruction**
- Action Coaching/Observation Feedback
- Student Culture Routines

Texas Instructional Leadership (TIL) is designed to strengthen a leader's skill in coaching school principals as they lead effective weekly data meetings through the **See it, Name It, Do It** model of practiced-based professional development. Successful schools ensure that teachers spend more time teaching what students really need to know by determining the procedural errors and misconceptions in student work and maximize reteaching at the point of use to ensure student mastery of concepts and skills.

**Data Driven Instruction** addresses components of effective data meetings that include:

- Preparing to Lead Data Meetings
  - Fully Unpack Learning Standards & Assessment Items
  - Create Exemplar Responses & Success Criteria
  - Analyze Student Work for Gaps and Errors
  - Prepare and Script Data Meetings
- Practicing and Simulating Effective Data Meetings
- Planning Types of Reteach: Modeling and Guided Discourse

## Texas Instructional Leadership Components

The Data Driven Instruction module utilizes a job-embedded approach through three key pillars to ensure successful implementation.



Face-to-Face/Virtual  
Professional Development



Implementation  
Support



One-on-One  
Coaching

## Benefits of Data Drive Instruction

In Data Driven Instruction, strong instructional leaders prepare, plan and practice leading effective data meetings. Understanding student mastery and intentionally teaching to address misconceptions ensures that teachers have time to teach what students need to know to prepare them for the next grade, course, and high-stakes testing.

## Audience

Campus Leadership Team (CLT)  
(CLTs = 1 Principal Manager (PM), 1 Campus Principal (CP) & 3-4 Lead Content Teachers)

## TIL Professional Development Options

- Region One ESC Professional Development
- Customized District Professional Development

## Leading Research

"The practice of having teachers work together to study student work is one of the most promising professional development strategies in recent years. Examining student work helps teachers intimately understand how state and local standards apply to their teaching practice and to student work. (Joan Richardson, NSDC)

The Effective Schools Framework (ESF) describes key practices of successful schools identified in five prioritized levers. (TEA, ESF 2019). At the center of the framework is effective instruction, which includes essential action 5.3 data-driven instruction. Understanding how to prepare, lead, and implement effective data meetings is fundamental to continuous school improvement and positive student outcomes.

Texas Instructional Leadership is based on the work of Paul Bambrick-Santoyo's Leverage Leadership 2.0 and Data Driven Instruction 2.0.

## Contact Us to Learn More:

**Catalina Requeenez, Coordinator**  
Texas Instructional Leadership  
carequeenez@esc1.net (956) 984-6212

**Kelly K. VanHee, Administrator**  
Office of Curriculum, Instruction,  
and Assessment  
kkvanhee@esc1.net (956) 984-6154

**Dr. Darlene Rogers, Director**  
Laredo Satellite Office  
drogers@esc1.net (956) 795-0000

**Ruben Degollado, Director**  
State Improvement Initiatives and  
ESSA Compliance  
rdegollado@esc1.net (956) 984-6185



# Helping Educational Leaders Build Capacity!